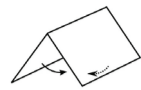
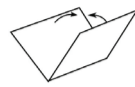


Head to bit.ly/kingsdragon if you need any assistance



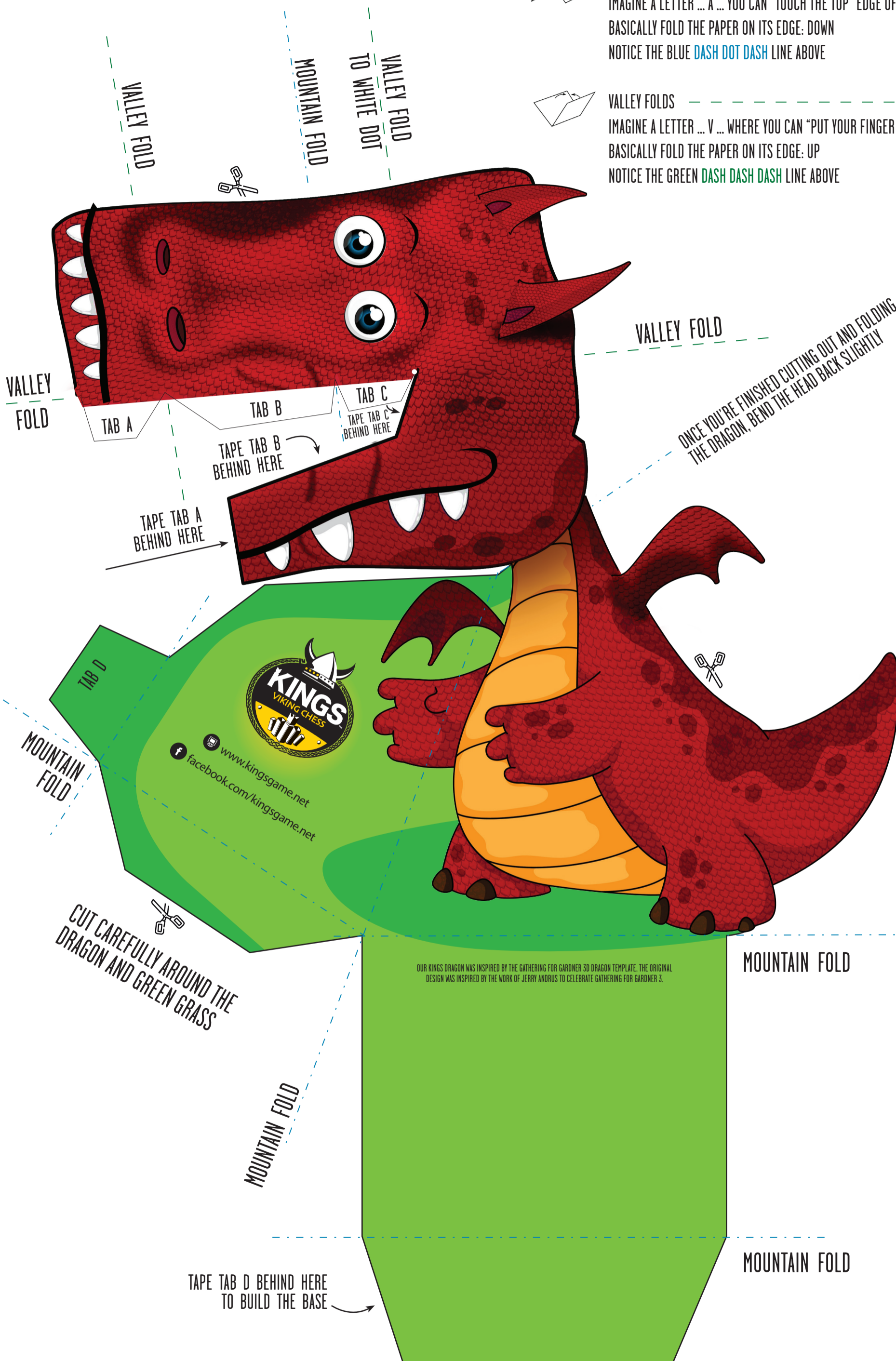
MOUNTAIN FOLDS

IMAGINE A LETTER ... A ... YOU CAN "TOUCH THE TOP" EDGE OF THE PAPER
BASICALLY FOLD THE PAPER ON ITS EDGE: DOWN
NOTICE THE BLUE DASH DOT DASH LINE ABOVE



VALLEY FOLDS

IMAGINE A LETTER ... V ... WHERE YOU CAN "PUT YOUR FINGER INSIDE" THE SHAPE
BASICALLY FOLD THE PAPER ON ITS EDGE: UP
NOTICE THE GREEN DASH DASH DASH LINE ABOVE



VALLEY FOLD

MOUNTAIN FOLD

VALLEY FOLD
TO WHITE DOT

VALLEY FOLD

TAB A

TAB B

TAB C

TAPE TAB B BEHIND HERE

TAPE TAB C BEHIND HERE

TAPE TAB A BEHIND HERE

VALLEY FOLD

ONCE YOU'RE FINISHED CUTTING OUT AND FOLDING THE DRAGON, BEND THE HEAD BACK SLIGHTLY

TAB D

MOUNTAIN FOLD

CUT CAREFULLY AROUND THE DRAGON AND GREEN GRASS

MOUNTAIN FOLD

TAPE TAB D BEHIND HERE TO BUILD THE BASE

MOUNTAIN FOLD

MOUNTAIN FOLD

OUR KINGS DRAGON WAS INSPIRED BY THE GATHERING FOR GARDNER 3D DRAGON TEMPLATE. THE ORIGINAL DESIGN WAS INSPIRED BY THE WORK OF JERRY ANDRUS TO CELEBRATE GATHERING FOR GARDNER 3.